



waiuku
ZERO WASTE

Sue Wallis, Sei Brown and Chelsea Kitzen

Our proud history

- **Waiuku Zero Waste** Limited formed in 2014 as a charitable business. We are a community enterprise delivering social, environmental and local economic benefit for our community.
- **The Workshop Trust was established in 2013** before that we were a Mens Shed
- Initially owned by **Waiuku and District Community Workshop Trust** and **Xtreme Zero Waste** from Raglan whose fabulous support helped us to get started.
- Awarded 5+2 year CRC contract, now to June 2022 with discussions on a 10 year contract.
- **Highly regarded by our local community.** We serve 20,000 residents stretching over Waiuku, Clarks Beach, Awhitu peninsula and towards Pukekohe



Thank you to our amazing partners

- ✓ Auckland Council
- ✓ Franklin Local Board
- ✓ Xtreme Zero Waste
- ✓ Recycling Centre operators across Auckland and Aotearoa
- ✓ Waiuku Business Association
- ✓ Local community groups
- ✓ Mana Whenua and Iwi
- ✓ Zero Waste Network
- ✓ Community Enterprise Network

From humble beginnings in 2014



Site improvements



- Surfacing and drainage work
- Indoor & outdoor retail spaces
- New community spaces



Our Zero Waste values



Our amazing staff



Our Performance

Environmental outcomes:

- ▶ Over 2,000 tonnes handled p.a. (1,400 tonnes reused/recycled)
- ▶ To date we have handled **11,541** tonnes diverting **7133** tonnes to reuse and recycling.
- ▶ 100% more material per month than in 2014
- ▶ Currently divert 70% by volume and 61% by weight

Social, educational and cultural outcomes

- ▶ 1,500 volunteer days giving over 10,000 hours
- ▶ Each year 15-20 groups for site visits, over 200 attendees
- ▶ Support local iwi to deliver their Para Kore aspirations including events at the local Reretēwhioi marae

Our Performance since 2014

We employ 16 local staff with disposable income of \$450k spent in the local community (Nearly \$2m since 2014)

We support local suppliers 70% from Waiuku/50 kms

\$105,000 received in grants to further our waste reduction

We support local schools, charities and community groups with discounts and donations.

\$200k saved from other Council contracts

Cost to Council reduced by \$40,000 EVERY year

Local Board projects

- Promoting zero waste at 10 events
- Online zero waste campaigns with over 25,000 views and 6000 followers
- On site learning events for schools, teachers, trap and bait day, compost collective, Waste free parenting and junk play for kids
- Site tours/events for businesses and community groups
- Support zero waste champions in the community
- Business education and reuse collections
- Support and capacity building for groups



Connecting with our Community

- ▶ Reaching out to the wider Franklin Community to extend our Zero Waste message.
- ▶ Find synergies with other groups where we can work together on environmental and zero waste projects in other areas.



Community Workshop

- ▶ Woodwork Workshop to restore and repair furniture and other items
- ▶ Membership is made up of a group of volunteers with a wide range of backgrounds
- ▶ Building social connections
- ▶ Developing skills for young and old, women and men
- ▶ Hosting Woodworking Classes - kids and adults



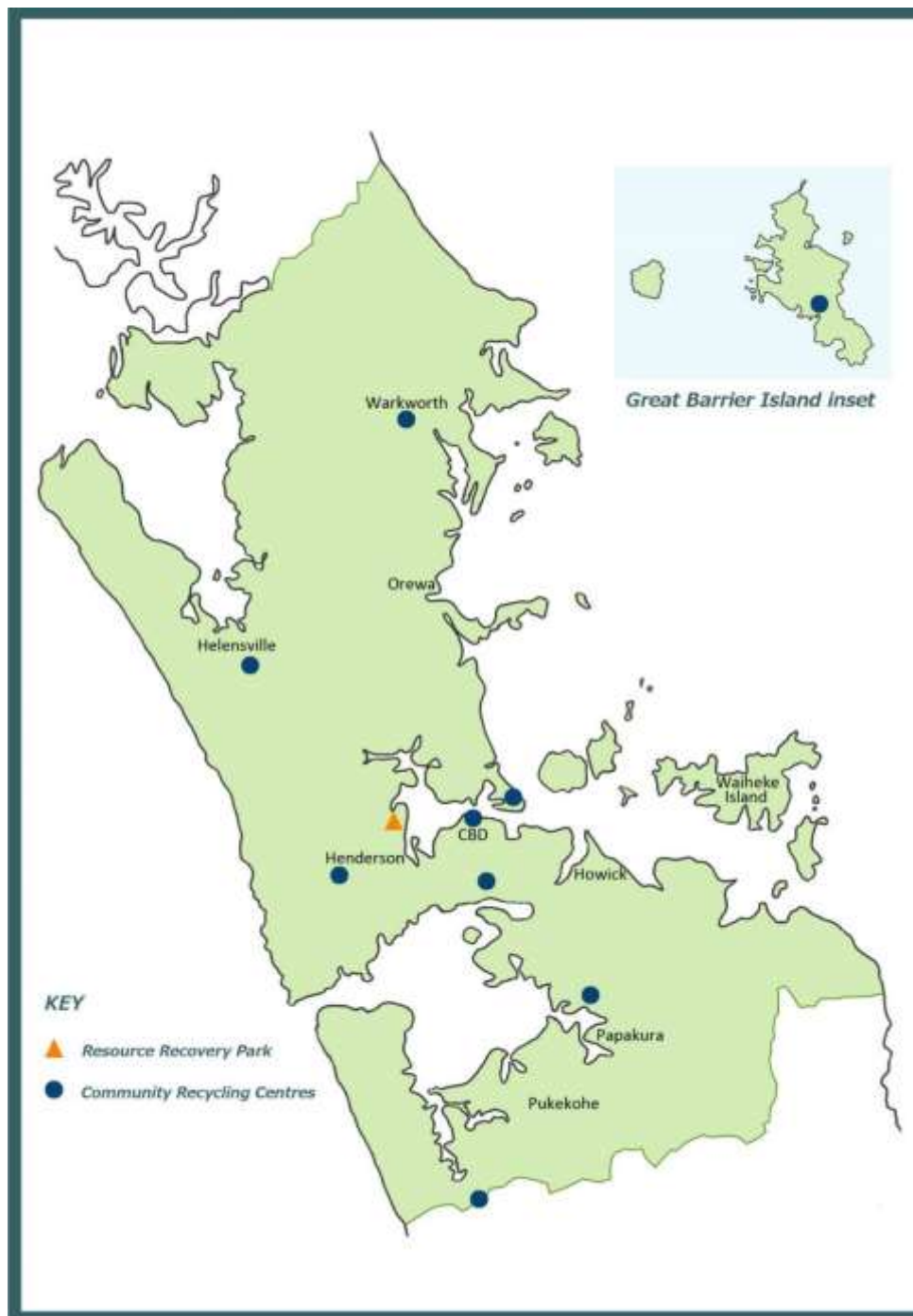


Tool Library

- ▶ Low-cost membership based access to borrowing tools
- ▶ Grant through the Auckland Council Waste Minimisation Fund
- ▶ Over 200 power and hand tools and gardening equipment
- ▶ Sharing resources - encouraging people to borrow rather than buy

**COMMUNITY
RECYCLING CENTRE**

Hosking Pl ➔



What is a Community Enterprise?

A working definition often used the Zero Waste Network

Community enterprises are businesses that trade with the aim of tackling social, environmental and economic problems in a particular place or community.

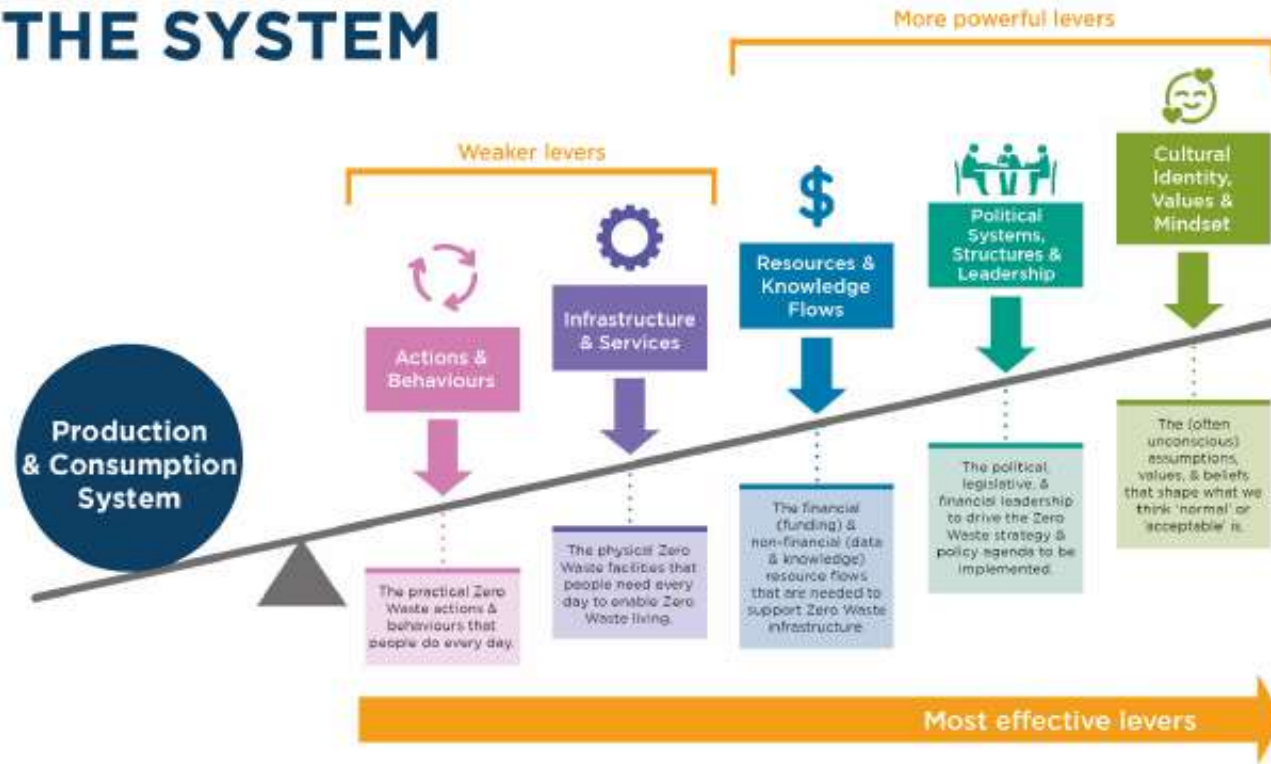
- Their mission is consistent with delivering social, cultural, environmental or local economic benefit for their community.
- They may also deliver wider public benefits as an outcome of their work.
- They generate a substantial portion of their income from trade and reinvest their surplus in fulfilling their mission.



At this moment our current purpose in the community is to provide a solutions to some of our community's waste problems

- We accept and process refuse
- We sort and divert what we can
- This process of sorting and reuse and retail has created jobs
- For longer term sustainability education is important and so we also deliver community education to support the need to change our consumer behaviours
- We support local projects e/g/ Waiuku Workshop and the Tool Library, Matariki Celebrations and Zero Waste Events, Local Board Projects
- We have some influence on certain regional committees and national panels that helps to highlight our community needs and aspirations

LEVERS WE CAN PULL TO CHANGE THE SYSTEM



Adapted from (Abson et al 2017) Systems Innovations - Mechanisms for creating change

An aerial photograph of a large industrial or waste management facility. The central feature is a long, rectangular building with a white and blue corrugated metal roof. To its right is another long, single-story building with a grey roof. The facility is surrounded by extensive paved areas, likely parking lots or loading docks, filled with numerous vehicles including cars, trucks, and forklifts. There are also several large, colorful skips or bins scattered throughout the site. The facility is bordered by green trees and vegetation on the left and bottom edges. The overall scene depicts a busy industrial or recycling center.

What are some of the ways Waiuku Zero Waste could support the Pukekohe community?

We'd love to hear from you

Get in touch if you would like to know more or are keen to work with us or we can help with your work.

Sue Wallis contact@waiukuzerowaste.co.nz

Sei Brown sei@waiukuzerowaste.co.nz

Tool Library/Workshop/ Events

Chelsea Kitzen projects@waiukuzerowaste.co.nz